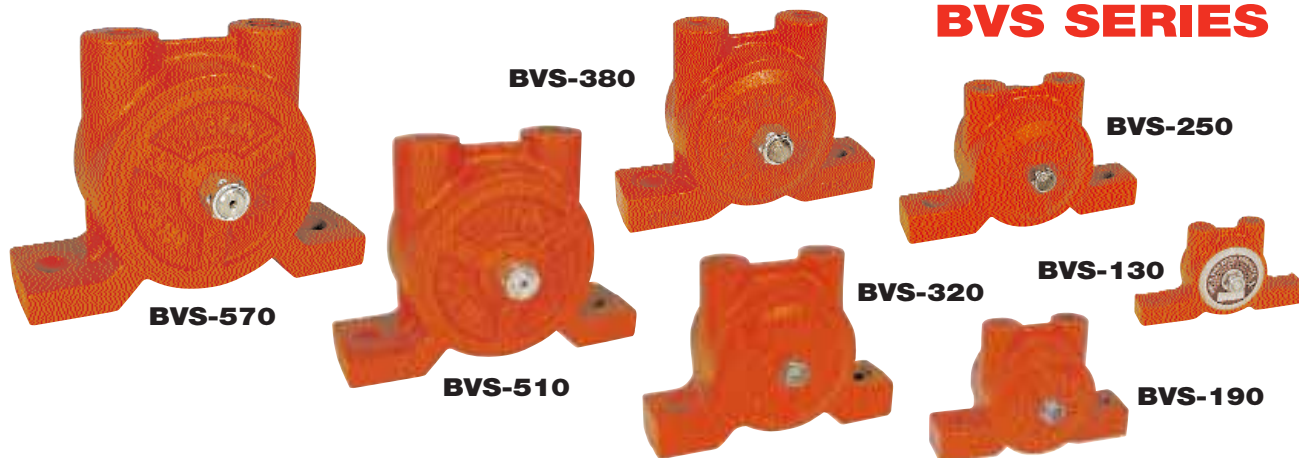


Turbine Vibrators

BVS SERIES



MODEL BVS: THREADED EXHAUST

VIBCO offers 10 models in the extra heavy duty BVS series. The use of non-lubricated air supply makes the BVS turbine vibrators perfect for applications in food and pharmaceutical (etc.) industries where oil exhaust would be objectionable. Exhaust port is threaded for piping off of air exhaust in closed, sanitized systems. Extra large amplitudes and wide range of sizes makes the BVS's ideal for quickly moving parts or materials.

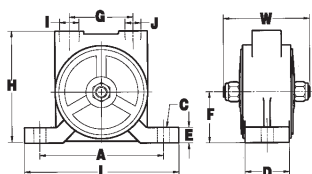
- Quiet, Meets OSHA As Low As 68 dB at 1 Meter
- No Lubrication Required
- Easily Repaired - One Moving Part
- Patented Design
- High Force Output
- Outlasts Piston Vibrators 3 to 1
- Oversized Bearings

TECHNICAL DATA

Model	Weight***		60 PSI		80 PSI					Max. Lbs.** Material In Bin	
	lbs.	kg.	Speed VPM	CFM	Speed VPM	CFM	lbs.	Force	N*		dB*
BVS-60	7/13 oz.	.198/.368	12000	4			20		89	66	200
BVS-130	10/20 oz.	.283/.567	8000	4.5	10500	5.5	75		334	67	750
BVS-160	3	1.4	9500	7	11000	8	160		712	70	1600
BVS-190	3.5	1.6	5500	7.5	7200	8.5	270		1201	71	2700
BVS-250	6	2.7	5200	8	7200	9	480		2136	72	4800
BVS-320	8.5	3.9	5500	9	6800	10	600		2669	70	5300
BVS-380	13	5.8	4500	16	5000	18	670		2981	74	6700
BVS-440	16	7.3	4300	18	4800	21	700		3114	76	7000
BVS-510	16	7.3	4000	18	4500	21	900		4004	77	9000
BVS-570	23	10.4	3600	21	4000	26	1050		4671	83	10500

Data obtained on Laboratory test block. Frequency and force will decrease on less rigid mount. Data subject to design changes.
 * Decibel from A-scale at 1 meter and 80 PSI. N = Centrifugal force in Newton.
 ** Rule of thumb for sizing "One lb. Vibrator Force" to each 10 lbs. of Bin Content" at 80 PSI.
 *** Fist Figure Aluminum 2nd - malleable iron.

DIMENSIONS



Model	A	C**	L	W	H	D	E	F	G	I*	J*
	inch/mm	inch/mm	inch/mm	inch/mm	inch/mm	inch/mm	inch/mm	inch/mm	inch/mm	inch/mm	inch/mm
BVS-60	3 76	1/4 6	3 3/16 97	1 5/8 41	2 1/16 62	3/4 19	5/8 16	1 3/16 30	1 1/4 32	1/8 - NPT	1/8 - NPT
BVS-130	4 102	3/8 10	4 7/8 124	1 7/8 48	2 5/8 67	7/8 22	5/8 16	1 1/4 32	1 1/16 37	1/8 - NPT	1/4 - NPT
BVS-160	4 102	3/8 10	5 1/2 140	2 1/8 73	3 5/8 92	1 3/8 35	9/16 14	1 11/16 43	1 7/8 48	1/4 - NPT	3/8 - NPT
BVS-190	4 102	3/8 10	5 1/4 133	3 3/16 81	3 7/16 87	1 5/16 33	7/8 22	1 9/16 40	1 7/8 48	1/4 - NPT	3/8 - NPT
BVS-250	5 127	1/2 13	6 3/4 171	3 9/16 90	3 15/16 100	1 5/8 41	7/8 22	1 7/8 48	2 5/16 59	1/4 - NPT	3/8 - NPT
BVS-320	5 127	1/2 13	6 3/4 171	4 102	4 7/8 124	1 5/8 41	1 1/8 29	2 1/4 57	2 3/4 70	3/8 - NPT	1/2 - NPT
BVS-380	6 152	5/8 16	7 15/16 202	4 3/4 121	5 3/16 148	2 51	1 1/8 29	2 11/16 68	3 76	3/8 - NPT	1/2 - NPT
BVS-440	7 178	5/8 16	8 15/16 227	4 3/4 121	5 3/4 146	2 3/16 56	1 3/16 30	2 7/16 62	3 7/16 87	1/2 - NPT	3/4 - NPT
BVS-510	7 178	5/8 16	8 15/16 227	4 3/4 121	5 3/4 146	2 1/4 57	1 1/4 32	2 9/16 65	3 7/16 87	1/2 - NPT	3/4 - NPT
BVS-570	8 203	3/4 19	10 3/16 259	5 7/16 138	7 1/4 184	2 15/16 75	1 25	3 3/8 79	4 102	3/4 - NPT	1 - NPT

*NPT Pipe Tap Size **Bolt Size
 Note: Dimensions & data subject to change without notice.