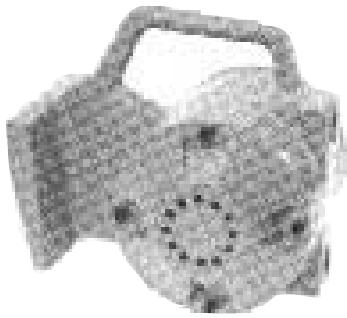
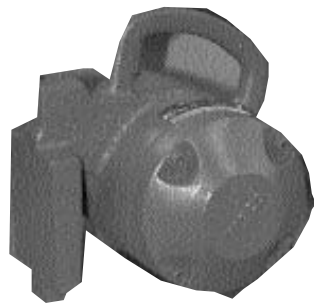


Turbine Vibrators

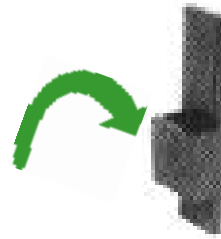


CCW-5000 RAILROAD CARSHAKER



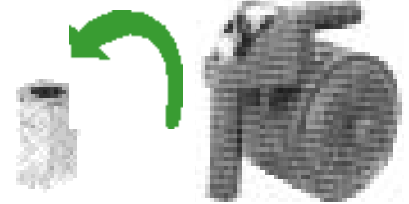
**CCW-2000-2"
CCW-2000W-3"**

**Female
Brackets**



**UWF-1 for 2"
UWF-3 for 3"**

**HEAVY DUTY
SERIES**



UPF

VSP-510

TECHNICAL DATA

Model	Weight		60 PSI		80 PSI				Max. Lbs.** Material in Bin	
	lbs.	kg.	Speed VPM	CFM	Speed VPM	CFM	lbs. Force	N*		dB*
CCF, CCL & CCW-2000	23	10.5	4000	30	6000	40	2000	8998	78	20000
CCF & CCL-5000	48	21.8	4000	35	6000	50	5000	22245	75	50000
CCW-5000	48	21.8	5000	40	7200	50	7000	31143	78	70000
CCF & CCL-7000	48	21.8	5000	40	7200	50	7000	31143	78	70000
VSP-510	15	6.8	4000	18	4500	21	1000	4004	77	9000

Data obtained on Laboratory test block. Frequency and force will decrease on less rigid mount. Data subject to design changes.

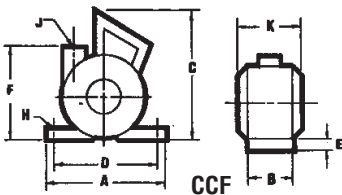
* Decibel from A-scale at 1 meter and 80 PSI. N = Centrifugal force in Newton. ** Rule of thumb for sizing "One lb. Vibrator Force" to each 10 lbs. of Bin Content" at 80 PSI.

DIMENSIONS

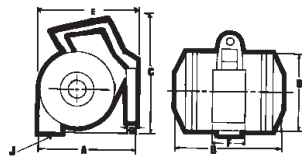
Model	A inch/mm		B inch/mm		C inch/mm		D inch/mm		E inch/mm		F inch/mm		G inch/mm		H** inch/mm		J* inch/mm		K inch/mm	
CCF-2000	7 ³ / ₈	188	2	51	7 ³ / ₈	187	6	152	3/4	19	5 ¹ / ₁₆	138	—	5/8	16	3/4 - NPT	7 ³ / ₄	197	—	—
CCL-2000	7 ³ / ₈	194	5 ⁷ / ₁₆	138	7 ³ / ₈	187	6	152	3/4	19	7/8	22	—	9/16	14	3/4 - NPT	7 ³ / ₄	197	—	—
CCW-2000	6 ⁷ / ₈	175	7 ³ / ₄	197	7 ¹ / ₈	181	5 ¹ / ₈	130	12	305	2 ³ / ₈	60	1 ¹ / ₁₆	17	—	—	3/4 - NPT	—	—	—
CCF-5000, 7000	10	254	3	76	9	229	8	203	1	25	6	153	—	—	3/4	19	1 - NPT	8 ¹ / ₂	216	—
CCL-5000, 7000	9 ¹ / ₄	235	8	203	9 ¹ / ₄	235	7 ³ / ₄	197	1	25	1 ¹ / ₁₆	27	—	—	6	153	1 - NPT	—	—	—
CCW-5000	9	229	8	203	9 ¹ / ₄	235	6 ¹ / ₈	156	—	—	6	152	1 ³ / ₁₆	30	—	—	1 - NPT	—	—	—

* NPT Pipe Tap Size

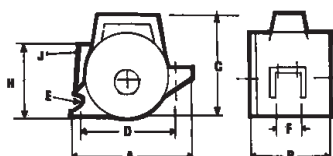
** Bolt Size



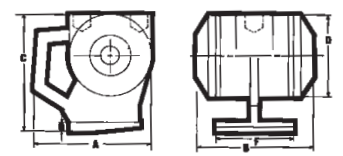
CCF



CCW-2000



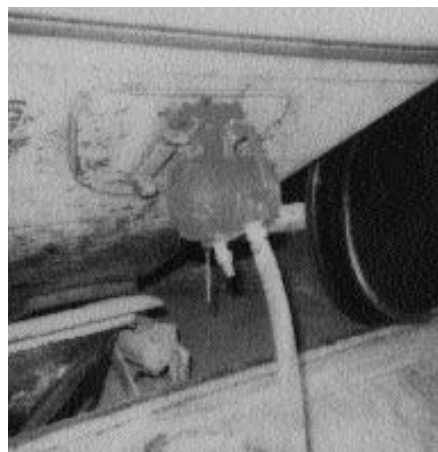
CCL



CCW-5000



CCW-2000 on distribution boxes



CCW-5000 railroad car shaker



VSP-510 on burial vault forms

PHONE ORDER: 1-800-633-0032

FAX: 1-401-539-2584