

"SILENT" Pneumatic Vibrators

BBS SERIES

FBS SERIES



BBS-160
BBS-190

BBS-130

BBS-100



FBS-160
FBS-190

FBS-130

FBS-100

MODEL FBS & BBS

BBS-100, 130, 160 and 190 - smallest of VIBCO turbine vibrators; with versatile mount and aluminum housing.
*Never needs oil for continuous duty operation. The FBS-100, 130, 160 and 190 are designed especially as a match

plate vibrator for the foundry industry. For fast start, high RPM and force and low noise with a built-in muffler. The match plate vibrators to be used only for intermittent duty.

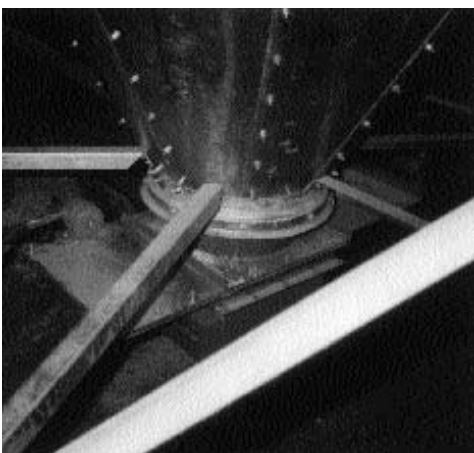
TECHNICAL DATA

Model	Weight***		60 PSI		80 PSI					Max. Lbs.** Material In Bin
	lbs.	kg.	Speed VPM	CFM	Speed VPM	CFM	lbs.	Force N	dB*	
FBS-100	10.5 oz.	.298	15000	5			30	133	66	For Match-Plates
FBS-130	16 oz.	.454	13000	6	15000	7	150	667	68	For Match-Plates
FBS-160	24 oz.	.680	10500	6	13000	7	225	1001	68	For Match-Plates
FBS-190	26 oz.	.737	8500	6	10000	8	250	1112	70	For Match-Plates
BBS-100	5 oz.	.142	12000	3.5			20	89	66	200
BBS-130	9 oz.	.255	8000	4.5	10500	5.5	75	334	67	750
BBS-160	12 oz.	.340	5500	5	9000	7	160	712	67	1600
BBS-190	15 oz.	.425	8500	5	10000	7	250	1112	70	2500

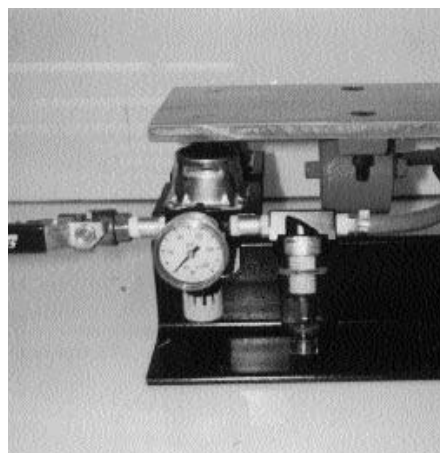
Data obtained on Laboratory test block. Frequency and force will decrease on less rigid mount. Data subject to design changes.
* Decibel from A-scale at 1 meter and 80 PSI. N = Centrifugal force in Newton. ** Rule of thumb for sizing "One lb. Vibrator Force" to each 10 lbs. of Bin Content" at 80 PSI.

DIMENSIONS	Model	A	B	C	D	E	F**	G	H	J	K	L
		inch/mm	inch/mm	inch/mm	inch/mm	inch/mm	inch/mm	inch/mm	inch/mm	inch/mm	inch/mm	inch/mm
	FBS-100 BBS-100	9/16 14	1/8 - NPT	1 1/4 32	3 1/4 83	1 3/8 35	5/16 8	1 1/2 12	1 25	1 7/16 37	5/16 16	1 3/16 30
	FBS-130 BBS-130	5/8 16	1/4 - NPT	1 3/4 44	3 3/4 95	1 9/16 40	3/8 10	9/16 14	1 3/16 30	2 1/4 57	5/16 16	1 7/16 37
	FBS-160 190 BBS-160 190	3/4 19	1/4 - NPT	1 3/4 46	4 1/8 105	1 13/16 46	3/8 10	1 1/16 17	1 1/4 32	2 9/16 65	5/16 16	1 9/16 40

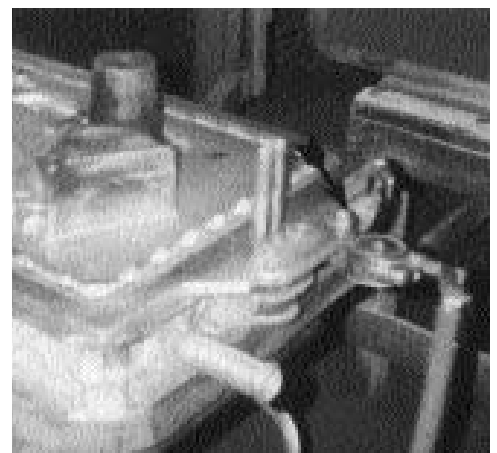
*NPT Pipe Tap Size **Bolt Size



VS-250 on transfer chute



VS-190 on test table



FBS-190 on molding machine